

BioEntry R2

Compact Fingerprint Reader



Suprema BioEntry R2 is a compact fingerprint reader exclusively designed for centralized access control systems. Packed in a slim, mullion-type design, BioEntry R2 provides high-definition fingerprint image capture, minutiae extraction as well as dual-frequency multi RF card reading capability. Combined with Suprema's intelligent biometric controller, the CoreStation, BioEntry R2 completes biometrics-driven access control system with enhanced simplicity and level of security of centralized system topology.

BioEntry R2

Compact Fingerprint Reader

Features



Multi RFID card reading

- LF(125kHz), HF(13.56MHz) dual-band
- Reads all primary card types (EM, MIFARE, MIFARE Plus, DESFire EV1/EV2, FeliCa, NFC)



Field-proven fingerprint technology

- Latest Suprema fingerprint algorithm
- High-precision OP5 optical sensor



Standardized communication

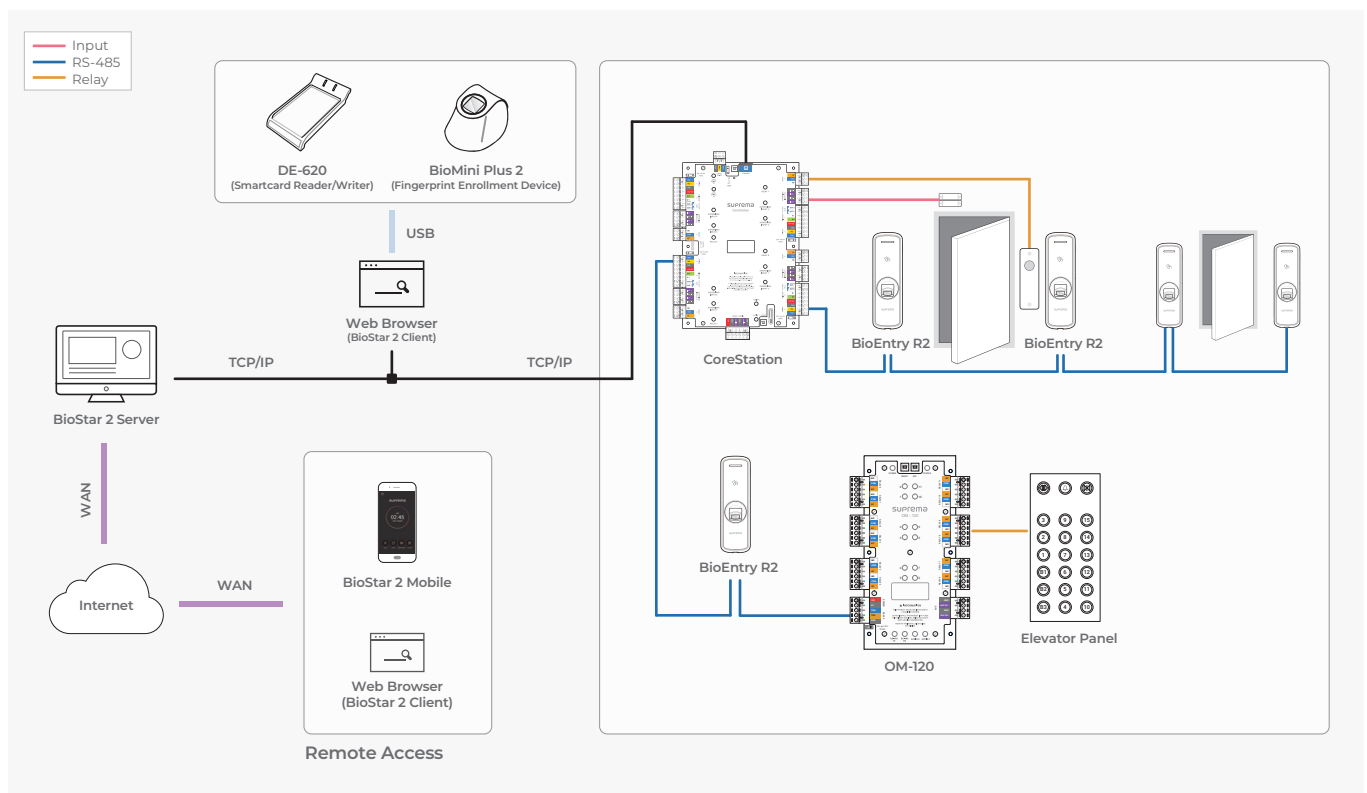
- Open Supervised Device Protocol (OSDP)

Specifications

Model Name	BER2-OD
Biometric	Fingerprint
Sensor Type	Optical Sensor (OP6)
Template	SUPREMA / ISO 19794-2 / ANSI 378
Extractor / Matcher	MINEX certified and compliant
RF Option	125kHz EM & 13.56MHz MIFARE, MIFARE Plus, DESFire EV1/EV2*, FeliCa, NFC
CPU	1.0 GHz
Memory	32MB Flash + 32MB RAM
LED	Multi-Color
Sound	Multi-tone Buzzer
RS-485	1ch Slave, OSDP V2.1.6
Tamper	Supported
Power	DC 12V
Operating Temperature	-20°C ~ 50°C
Operating Humidity	0% ~ 80%, non-condensing
Dimensions (WxHxD, mm)	50 x 164 x 37.5
Weight	158g
Certificates	CE, FCC, KC, RoHS, REACH, WEEE

* DESFire EV2 cards are supported by having backward compatibility of DESFire EV1 cards. CSN and smart card functions are compatible with BioEntry R2.

System Configurations



Suprema Inc.

17F Parkview Tower, 248, Jeongjail-ro, Bundang-gu, Seongnam-si, Gyeonggi-do, 13554, Republic of Korea
 T +82 31 783 4502 E sales_sys@supremainc.com www.supremainc.com



For more information about Suprema's global branch offices, visit the webpage below by scanning the QR code.
<https://www.supremainc.com/en/about/contact-us.asp>